

# KENDALL - Y

A SUBDIVISION OF PART OF THE S.W. 1/4 OF SECTION 10, T.1N., R.9E.  
CITY OF FARMINGTON HILLS,  
OAKLAND COUNTY, MICHIGAN



**SURVEYOR'S CERTIFICATE**

I, Roy J. Russell, Surveyor, Certify:

That I have surveyed, divided and mapped the land shown on this plat described as follows:

KENDALL-Y, a subdivision of part of the S.W. 1/4 of Section 10, T.1N., R.9E., City of Farmington Hills, Oakland County, Michigan,

Described as beginning at a point located N.00°16'50"E. along the Easterly line of "KENDALLWOOD" subdivision (Liber 76 of Plats, Pages 16, 17 & 18, O.C.R.) 1296.19 feet and N.89°57'20"E., 60.00 feet from the S.W. Corner of said Section 10; thence N.00°16'50"E., 180.00 feet to a point on the boundary line of "KENDALLWOOD No. 2" subdivision (Liber 82 of Plats, Pages 19 & 20 O.C.R.) and the southerly line of East Tulipwood Road (60 feet wide), thence N.89°57'20"E., along said line 532.86 feet, thence on a curve to the left along said line (radius equals 377.22 feet, long chord bears N.81°09'50"E., 115.32 feet) a distance of 115.77 feet to a point on the westerly line of Kendallwood Drive (60 feet wide), thence on a curve to the left along said westerly line (radius equals 674.61 feet, long chord bears S.23°50'35"E., 146.50 feet), a distance of 146.78 feet, thence S.23°50'35"E., 130.00 feet, thence on a curve to the right (radius equals 804.61 feet, long chord bears N.30°00'56"W., 1.71 feet) a distance of 1.71 feet, thence S.89°57'20"W., 593.56 feet to the point of beginning.

Said plat consists of 7 lots numbered 1 through 7 inclusive, and contains 2.7782 acres.

That I have made such survey, land division and plat by the direction of the owners of such land.

That such plat is a correct representation of all the exterior boundaries of the land surveyed and the subdivision of it.

That the required monuments and lot markers have been located in the ground as required by Section 125 of the Act.

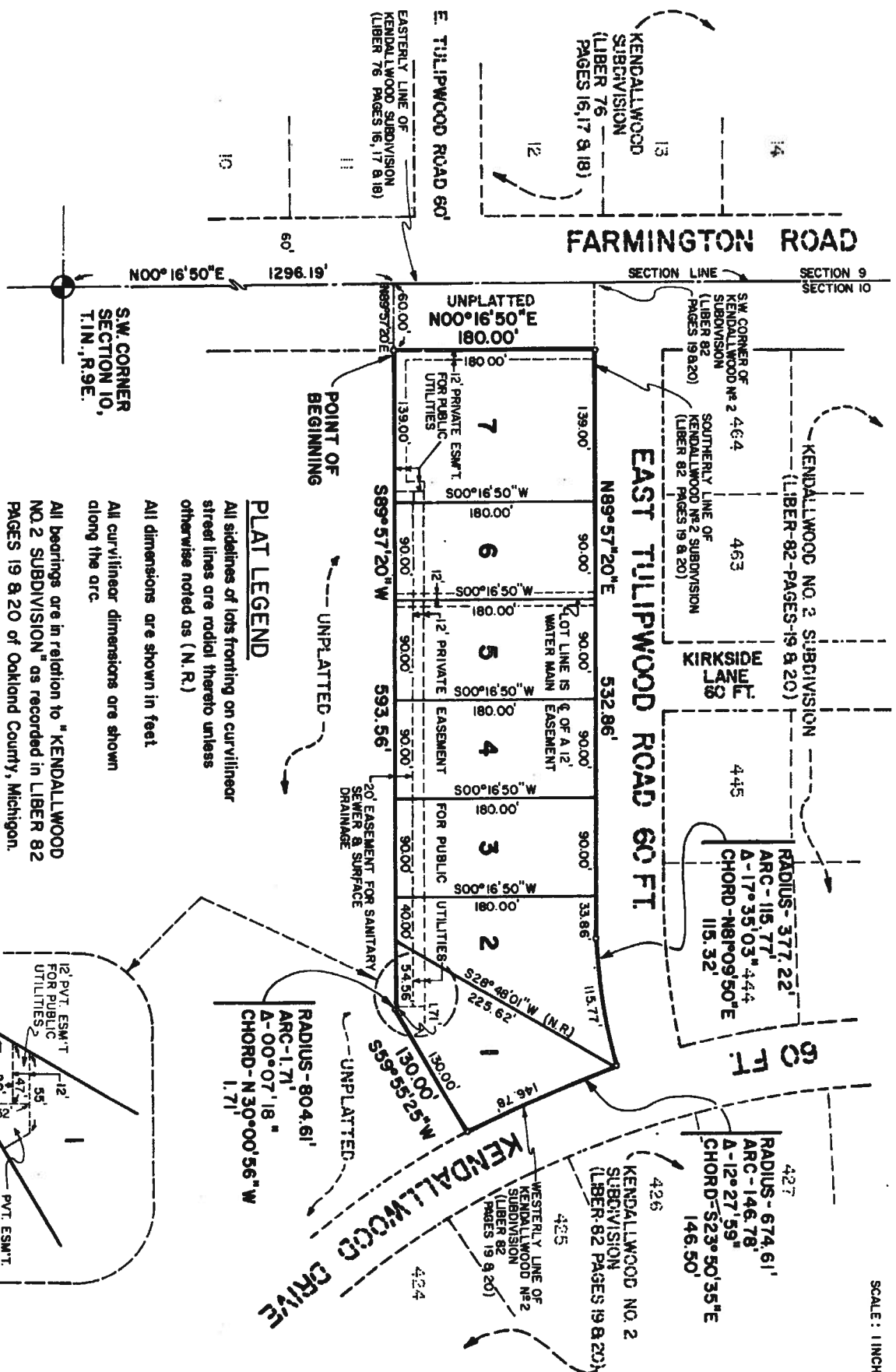
That the accuracy of survey is within the limits required by Section 126 of the Act.

That the bearings shown on the Plat are expressed as required by Section 126 (3) of the Act and as explained in the Legend.

DATE: Aug. 28, 1980

ROY J. RUSSELL & ASSOCIATES, P. C.  
ENGINEERS, PLANNERS & SURVEYORS  
32910 THIRTEEN MILE ROAD  
FARMINGTON HILLS, MICHIGAN 48018

BY: Roy J. Russell PRESIDENT  
ROY J. RUSSELL, R.L.S. #11197



**PLAT LEGEND**

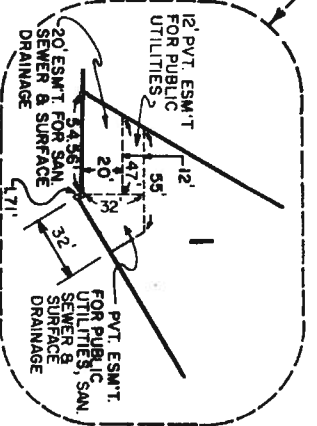
All sidelines of lots fronting on curvilinear street lines are radial thereto unless otherwise noted as (N.R.)

All dimensions are shown in feet

All curvilinear dimensions are shown along the arc

All bearings are in relation to "KENDALLWOOD NO. 2 SUBDIVISION" as recorded in LIBER 82 PAGES 19 & 20 of Oakland County, Michigan.

The symbol "x" indicates a concrete monument. All lot markers are 1/2" iron bars and are 18" long.



CERTIFICATE THREE COPY OF  
RECORDED PLAT  
BY DEPARTMENT OF COMMERCE

By Richard E. Loman, L.S.  
Richard E. Loman, L.S.  
Manager Plat Section

Date April 5, 1984

# KENDALL - Y

A SUBDIVISION OF PART OF THE S.W. 1/4  
OF SECTION 10, T.1N., R.9E.  
CITY OF FARMINGTON HILLS,  
OAKLAND COUNTY, MICHIGAN

### COUNTY TREASURER'S CERTIFICATE

The records in my office show no unpaid taxes or special assessments for the five years preceding April 14, 1983 involving the lands included in this plat.

Douglas J. Williams  
DOUGLAS J. WILLIAMS, DEPUTY COUNTY TREASURER  
OAKLAND COUNTY, MICHIGAN

### COUNTY DEAIN COMMISSIONER'S CERTIFICATE

Approved on Oct 12, 1983 as complying with Section 192 of Act 286, P.A. 1967, and the applicable rules and regulations published by my office in the County of Oakland.

George W. Egan  
GEORGE W. EGAN, DEAIN COMMISSIONER  
OAKLAND COUNTY, MICHIGAN

### PROPRIETOR'S CERTIFICATE

Young Mens' Christian Association of Metropolitan Detroit, a corporation duly organized and existing under the laws of the State of Michigan by Robert W. Davis, President and Kenneth Isherwood, Senior Vice President-Finance, as proprietor, has caused the land to be surveyed, divided, mapped and dedicated as represented on this plat and that the public utility easements are private easements and that all other easements are for the uses shown on the plat.

YOUNG MEN'S CHRISTIAN  
ASSOCIATION OF METROPOLITAN  
DETROIT, A MICHIGAN NON-PROFIT CORPORATION  
2020 Witherell Street  
Detroit, Michigan 48226

### WITNESSES:

Juliette Davis  
JULIETTE DAVIS

Robert W. Davis  
ROBERT W. DAVIS, PRESIDENT

Rachel H. Webers  
RACHEL H. WEBERS

Kenneth Isherwood  
KENNETH ISHERWOOD, SENIOR VICE PRESIDENT-FINANCE

ACKNOWLEDGMENT  
STATE OF MICHIGAN )  
COUNTY OF WAYNE ) SS

Personally came before me this 8th day of April, 1980, Robert W. Davis, President and Kenneth Isherwood, Senior Vice President-Finance of the above named corporation to me known to be the persons who executed the foregoing instrument, and to me known to be such president and senior vice president-finance of said corporation, and acknowledged that they executed the foregoing instrument as such officers as the free act and deed of said corporation, by its authority.

My Commission Expires:

Jan 30, 1983

Charlye Louise Diggs  
Charlye Louise Diggs  
Notary Public, Wayne County, Mich.  
My Commission Expires Jan. 30, 1983

Wayne County, Michigan

### CERTIFICATE OF MUNICIPAL APPROVAL

I certify that this plat was approved by the City of Council of the City of Farmington Hills, at a meeting held on Oct 12, 1983, and was reviewed and found to be in accordance with Act 286, P.A. of 1967, and that adequate surety has been deposited to insure the installation of public sanitary sewer facilities within the plat, and that public water mains have been installed and are ready for connection.

Floyd A. Cairns  
FLOYD A. CAIRNS, CITY CLERK

### COUNTY PLAT BOARD CERTIFICATE

This plat has been reviewed and is approved by the Oakland County Plat Board on November 3, 1983 as being in compliance with all the provisions of Act 286, P.A. of 1967, and the Plat Board's applicable rules and regulations.

Richard R. Wilcox  
RICHARD R. WILCOX  
CHAIRMAN OF BOARD OF COMMISSIONERS

C. Hugh Doolittle  
C. HUGH DOOLITTLE, COUNTY TREASURER

Lynn D. Allen  
LYNN D. ALLEN, COUNTY CLERK  
AND REGISTER OF DEEDS

Harry E. Malca  
HARRY E. MALCA, R.I.S.,  
COUNTY PLAT ENGINEER

RECORDING CERTIFICATE  
STATE OF MICHIGAN )  
COUNTY OF OAKLAND ) SS.

This plat was received for record on 20th day of December, 1983, at 3:11 P.M. and recorded in Liber 180 of Plats on Page (9) 214-27.

Lynn D. Allen  
LYNN D. ALLEN, REGISTER OF DEEDS

